

# MINIIZ

THE NEWSLETTER OF  
PORT NICHOLSON MINIATURE BOTTLE CLUB.



VOL 1, NO.2, APRIL/MAY 1983.

The cover shows Jackie Smith our secretary with some of the bottles we had in the auction. It was printed on the front page of "The Evening Post" (Wellington) accompanied by the following article:

## To look at, not to drink

A woodpecker full of bourbon in one hand and a windmill full of Kummel liqueur in the other, the secretary of the Port Nicholson Miniature Bottle Club, Mrs Jackie Smith, gives a preview of just a few of the 2200 bottles that will be auctioned this weekend.

Sometimes the not-so-serious collectors of miniature liquor bottles cheat a bit.

They will sacrilegiously swig the contents of a nine-centimetre high bottle of Glenfiddich whisky, then fill it up with cold tea and repair the seal.

But the serious collectors, who are exhibiting their private collections, are not easily fooled.

The Port Nicholson Miniature Bottle Club is holding its public auction on Saturday and viewing starts tomorrow afternoon in the Gibsons and Paterson building on Cambridge Terrace.

There will be everything from tiny bottles of tonic water to wee bottles of "white lightning" — a 140 percent proof Polish spirit.

But for a really expensive drink, the highest price, \$75, is expected to go for a bottle of Scotch whisky.

All the bottles hold their original contents except those where the drink has disappeared legitimately, by evaporation.

The bottles on display come from four main collections.

An article on the auction will appear in the next edition.

\*\*\*\*\*

Partially as a 'Spin-off' of the auction we very much welcome the following new members:

George Kimpton	-	Redwood Valley, California
David Maund	-	Bishopstoke, U.K.
Erica Mulder	-	Itirangi, Auckland
Diane Opie	-	Patea, Taranaki
Stephen Ellis	-	Wellington
Chris Matthews	-	Newlands, Wellington
Donald Borrett	-	Vogeltown, Wellington
Stewart Goodman	-	Wadestown, Wellington
Russell Thomson	-	Karori, Wellington
Colin Kilpatrick	-	Iawa, Wellington

# NEWS : VIEWS : SNIPPETS !

## CUSTOMS DUTY & SALES TAX

One of our members has been somewhat vocal lately, and not without cause, having been hit rather hard by Customs duty, \$42.70 on one day is bad enough, but to get a parcel the following day and have to pay a further \$64.10 is enough to discourage even the most avid collector.

Customs tell me that all miniatures purchased overseas are subject to Customs Duty and Sales tax.

Following this, I have word for word copied out a pamphlet from the Department which the Customs official tells me will "explain it all". I leave it for you to form your own opinion as to what it all means. However, he did inform me that if miniatures were "swopped", this was classed as a gift and not subject to Customs duty, but whether this view is shared by ALL Customs officials remains to be seen.

CIO

H.M. CUSTOMS

CUSTOMS NOTICE No.1

THIS NOTICE RELATES TO THE  
IMPORTATION OF GOODS BY  
POST OR AIRCRAFT BY PRIVATE  
PERSONS

## GENERAL

1. These notes explain import licence, import duty, and sales tax concessions available for goods imported by post or air freight by private persons.
2. Unless specifically exempted, all imported goods are subject to import licence, import duty, and sales tax.

## GOODS IMPORTED AS GIFTS

3. The following concessions to BONA FIDE gifts sent from persons abroad to persons resident in New Zealand:
  - (a) Should the value of the gift for Customs purposes not exceed \$20.00 duty is not payable and except in the case of radio and television sets, sales tax is not chargeable. An import licence is not required.  
NOTE: This concession does not apply to a single gift in excess of \$20.00 being sent to more than one person or to several people overseas sending a single gift of over \$20 to one person.
  - (b) Should that value exceed \$20.00 but not exceed \$100.00, duty and sales tax are payable but an import licence is not required.
  - (c) Should that value exceed \$100.00, duty and sales tax are payable and an import licence is required if the goods are not specifically exempted from licensing.

## FAULTY OR DAMAGED GOODS

4. If goods are received in faulty or damaged condition, and are to be returned overseas for replacement, you should advise the Customs Department before the goods are re-exported. Duty is payable on replacements, but a refund of duty may be granted on account of the defective goods.

cont..

If the goods are to be sent overseas for repair, you should also approach the Customs Department, as in these circumstances duty is normally charged only on the cost of repairs when the goods are returned.

#### OTHER GOODS IMPORTED PRIVATELY

5. The following concessions apply to goods, other than bona fide gifts, imported by private persons:
- (a) Duty and sales tax are payable only when the total of the charges exceeds \$1.00.
  - (b) Import licences are not required for goods costing \$100.00 or less (inclusive of postal or airfreight charges) provided:
    - (i) The goods are for the personal use of the importer and/or his family and not for use in a trade, profession, or calling, and
    - (ii) The importation is not the result of an order taken or solicited in New Zealand, and
    - (iii) The goods are not imported in the same inward mail or aircraft as other goods from the same supplier.

#### VALUE FOR CUSTOMS PURPOSES

6. The value of goods for Customs purposes is determined by relatively complex legislation which takes account of the variety of commercial circumstances that can arise. In very general terms however, duty on goods imported into New Zealand is based on the price actually paid for them or the value or worth of the gifts sent.

#### SPLIT IMPORTATIONS

7. The concessions set out above apply to individual importations.
8. Any attempt to import goods in more than one package in order to keep each package within the concession limits will lead to the parcels being detained. Duty and sales tax will be payable and the goods may be forfeited if the issue of an import licence cannot be justified.

#### FURTHER INFORMATION

9. Persons requiring further information are advised to call at the office of the nearest Collector of Customs.

July 1982.

P.J. McKONE,  
Comptroller of Customs.

---

#### "RUBBISHED MINIATURES"

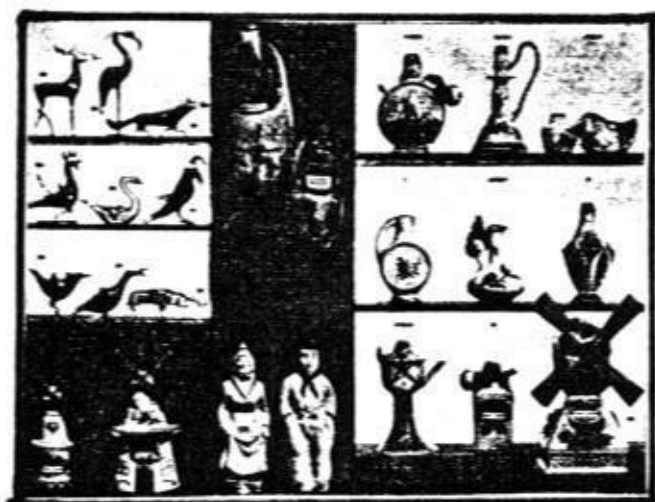
A dutiful Nephew collected up miniatures during his tour overseas, all well until he decided to do an overland trip and baggage was to a minimum, so what does he do - No he doesn't post them - he dumps them in a rubbish tin on the side of a street in London.....

# PORT NICHOLSON MINIATURE BOTTLE CLUB PUZZLE

DUTCH LIQUOR COMPANY	- - - - - P - - -
AUSTRALIAN WHISKY	- - - - - O - - -
MELON LIQUEUR FROM JAPAN	- - - - - R - - -
FREE BOURBON BIRD	- - - - - T - - -
PETER THOMPSON'S	- - - - - N - - -
WHISKY YOU CAN TAKE ANYWHERE	- - - - - I - - -
THE WHITE RUM	- - - - - C - - -
ILLICIT <i>WHISKY</i>	- - - - - H - - -
BLACK FELLAS	- - - - - O - - -
WHITE LIGHTNIN	- - - - - L - - -
BOUNCY GREEN DRINK	- - - - - S - - -
AUSTRALIAN LIQUOR COMPANY	- - - - - O - - -
WINDMILL MANUFACTURER	- - - - - N - - -
PHILIPPINE BREWER	- - - - - M - - -
ORANGE LIQUEUR	- - - - - I - - -
EMILY, ANNE AND CHARLOTTE	- - - - - N - - -
COOKIE COGNAC	- - - - - I - - -
LOVERS DRINK	- - - - - A - - -
OLD SCOTCH	- - - - - T - - -
LIFFEY WATER	- - - - - U - - -
CANADIAN PEER	- - - - - R - - -
FRENCH LIQUOR COMPANY	- - - - - E - - -
NO MORE THAN 50%	- - - - - B - - -
FORTIFIED WINE	- - - - - O - - -
JAPANESE WHISKEY	- - - - - T - - -
CACTUS DISTILLATE	- - - - - I - - -
LOCAL DISTILLER	- - - - - L - - -
HAWAIIAN RUM	- - - - - E - - -
INSTRUCTORS WHISKY	- - - - - C - - -
DUTCH LIQUEUR	- - - - - L - - -
MARASCHINO MAKER	- - - - - U - - -
TRAMPS RELATIVE	- - - - - B - - -



# .. RYNBENDE ..



Since the 1930's the Simon Rynbende Distilleries at Schiedam, Holland, have gladdened the hearts of miniature bottle collectors with their delightful and original bottles -both in glass and ceramic.

The Simon Rynbende Distillery was founded in 1793 by an enterprising young man of only 17 years of age.

Schiedam was the centre of the industry and the founder became a burgomaster of Schiedam.

For over 177 years this thriving industry remained in this City, and in 1970, a move was made and it

merged into the Henkes Distilleries group, the Head Office of which is situated at Hendrik-Ido-Ambacht, a small village at about 10 miles from Rotterdam.

Miniature Urns, as well as a Oil Lamp and a Candlestick are known in collections. It seems probable that at least three different releases were made of the Delft urns, some in the late 30's more in the late 50's and again in the late 60's.

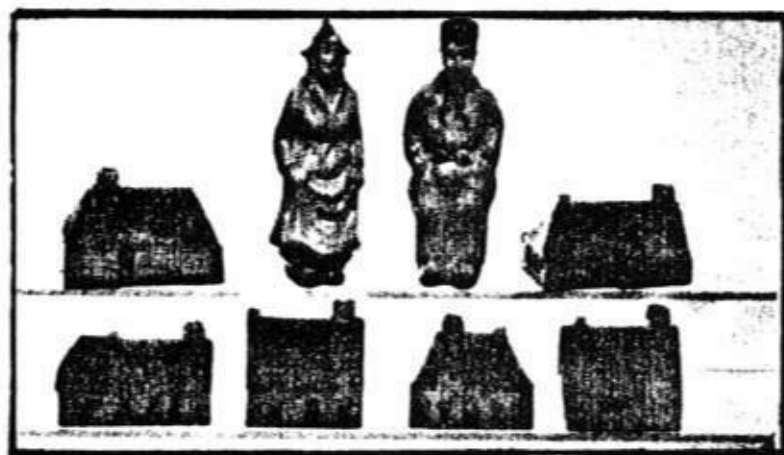
A set of ceramic figurals including the candlestick, Oil Lamp, Teapot, shoe and others were issued at different times. Some

figurals sold in the early years were multi-coloured - those later in the 60's in Delft blue and white.

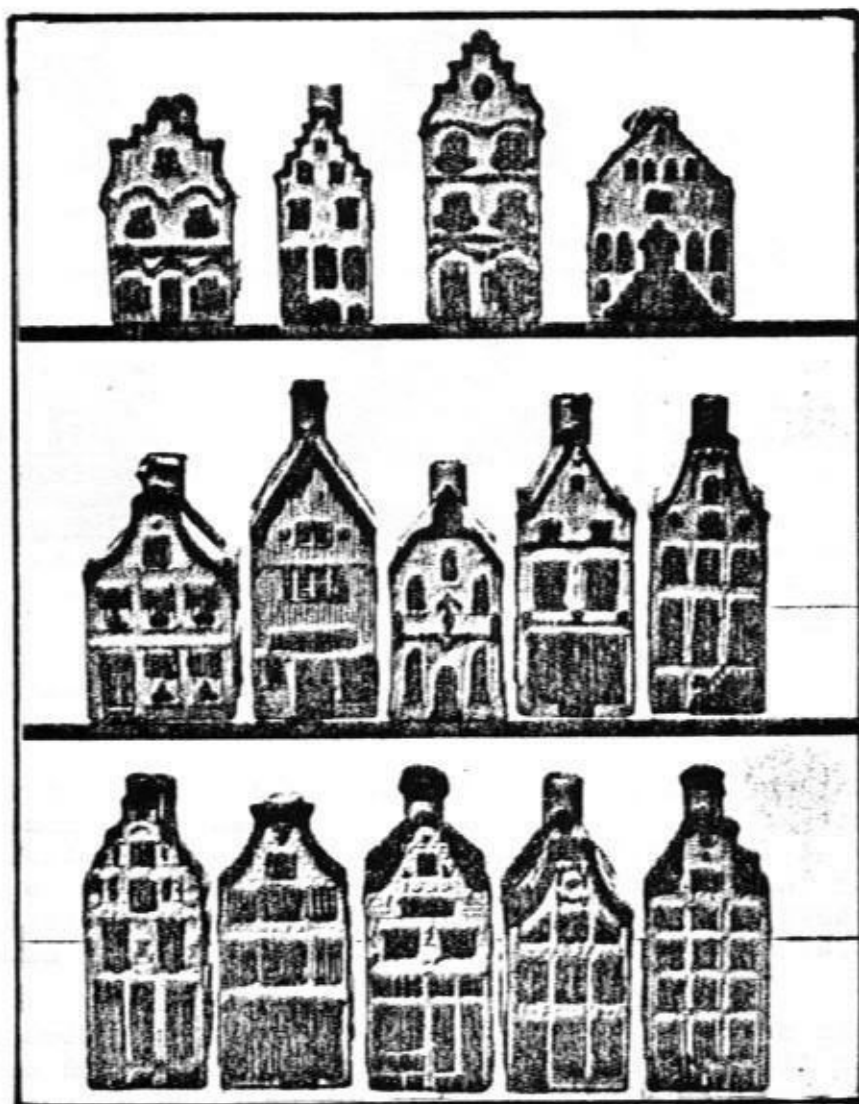


Two cats and a Poodle are dated as 1951, Guernsey Cow made for the Island of Guernsey as 1952. Bulldog 1959 and in the 60's the Bermuda Pink House, Deer, Kangaroo, Chimney Sweep, Sailor and Snowman.

Late 60's and early 70's also saw the issuance of the Farm Houses and the Dutch Farmer and his Wife.



# .. RYNBENDE ..



CANAL HOUSES

Rynbende's fame is based on their Canal Houses. - Beginning in 1959 they were given away to first class passengers on the Royal Dutch KLM Airlines, but it is understood this is no longer practised.

They are replicas of the 17th and 18th Century houses in Holland and are known by the City where they are located.

Each is made in Delft blue and white and each has a number either incised, stamped or lettered on the base of each bottle, and the number is always the same for each house whenever issued.

Some of the Canal Houses, in collections, are of a darker grey-blue hue with the blue trim, and some collectors believe these must be the earliest houses. No one knows for sure, and as the houses are made of earthenware, both the earthenware and the glazes may differ from batch to batch and year to year.

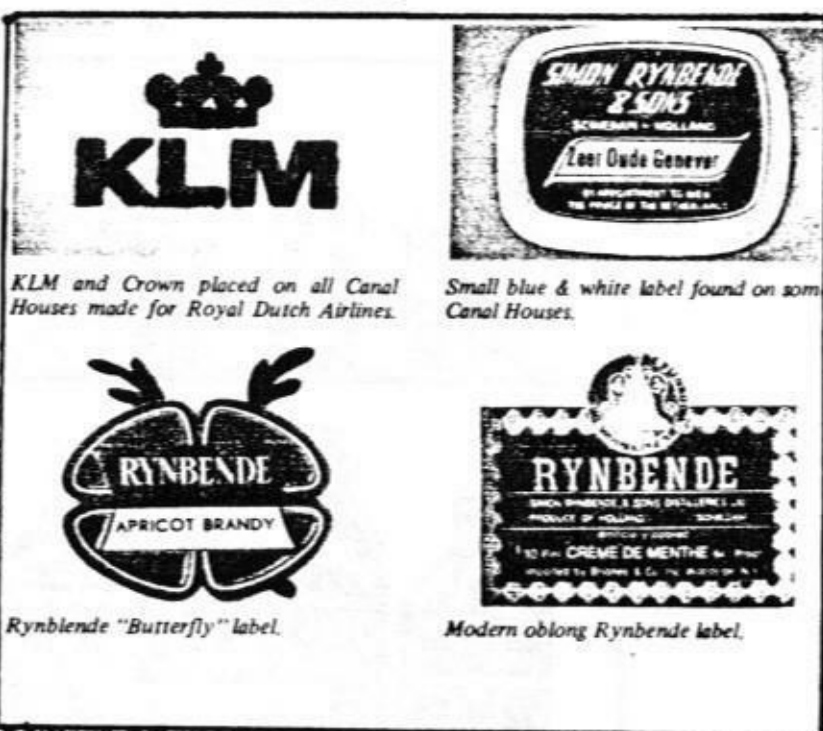
# .. RYNBENDE ..

## LABELS

Some collectors happily dated their bottles as "old" when they had the "Butterfly" label. It has been found on many of the early bottles. Recently, the Rynbende Farm Houses were exported bearing the "Butterfly" label.

The small "blue & white" label is found on some of the early Canal Houses.

More recent Rynbende miniature bottles have the familiar oblong label.



*KLM and Crown placed on all Canal Houses made for Royal Dutch Airlines.*

*Small blue & white label found on some Canal Houses.*

*Rynbende "Butterfly" label.*

*Modern oblong Rynbende label.*

## TRADEMARKS

**TRADEMARK 1.** Many collectors believe that the earliest Canal Houses were made for Rynbende by "Royal Delft Blue Holland" and some of the Canal Houses can be found with this designation on the bottom of the bottle as well as the trademark in blue of a small "House" with an ornate "Crown" above it. Many of these have also the KLM letters on the back of the bottle, some with the usual Crown above - and some without the Crown.

**TRADEMARK 2.** This seems to be the most commonly used Rynbende trademark - the two geometric figures with the name "Rynbende" between and "Distilleries Holland" stamped beneath. This is found on the bottom of the bottle. Some also have KLM and the Crown on the back. There are also some houses with no trademark at all - but stamped on the bottom are the words "Rynbende Distilleries Holland".

**TRADEMARK 3.** This Rynbende trademark - the circle with a wine glass in the centre - is found on many of the houses - and some have KLM and the Crown on the back.

**TRADEMARK 4.** Trademark 4 is seen on the Rynbende houses made during the last few years and when found indicates their recent origin. The geometric trademark with "Rynbende" between is placed on the back of the bottle and on the bottom is stamped "Rynbende Distilleries Schiedam Holland". The Rynbende Farm houses, recently issued, have both the trademark and name of the company - on the bottom of each bottle.





# CLUB NEWS

## WHO'S WHO IN THE CLUB

At the Annual General Meeting held on Sunday 30th January 1983, at 18 Bowers Street, Stokes Valley, the following were elected:-

<u>DESIGNATION:</u>	<u>NAME:</u>	<u>TELEPHONE:</u>
PRESIDENT	Marg Hollis	638-163 Wellington
VICE PRESIDENT	Colin Ryder	784-391 "
TREASURER	Helen Marson	686-415 "
EDITOR	Val Bergman	86-950 Paraparaumu
SECRETARY	Jackie Smith	399-536 Pukerua Bay
PUBLICITY	David Smith	" "

-----

We are sorry that Ross & Debbie Page have resigned from the Club. Both were responsible for the forming of the Club, and both were active members, Ross as President, Debbie as Secretary, they will be missed for their enthusiasm and their friendship.

We all wish you the very best for the future.

-----

## PHYL. WALSH in Germany

Phyl tells us how she was fortunate enough to be able to take a trip to Germany in 1982 to visit her Son and family. She stopped off in San Diego for 16 days, but was unable to find a great deal of miniatures, further on to Hamberg produced a greater selection, although somewhat dearer than they had been 6 years ago.

And then - "E U R E K A" - Aladdin's Cave, no less, - a small bottle shop, one wall lined with minis - a basket with some in at the front door, and as she pulled herself together, and returned to earth - there were more - several bins were "FULL" of the little treasures.

If that wasn't enough, the Owner had set up a tree and had it decorated in miniatures, and there they were, hanging from the branches'''. Phyl charmed her way into having the freedom of the Shop and was interested to see three different brands of New Zealand Wines.

We know without even asking that Phyl came out of that shop with a BIG smile - an empty pocket - and a load of miniatures.

-----

## " BON VOYAGE "

Pat Wilton is off on an Overseas trip in May and we all wish her a wonderful time (we think she's a bit mean not taking us) but, we are "nice" people and will await her return to listen with envy to her exploits, and "drool" over the new editions to the Wilton's collection.

-----

## NEWS ?????

Come on you lot - No news - No magazine.

You must have read an article somewhere in a book on Minis that YOU thought was interesting - copy it out and send it to Val, at 4 Hinemoa Street, Paraparaumu, Wgton - share it with us -.

If you don't have any books, give us a list of what you have to sell, or swop for a "Trading Post" page.

Failing that, you may have some ideas on how to improve our magazine ??.

-----

### ...CLUB NEWS

#### BUMPER STICKERS

A small supply of these are available for Club members at the cost of \$1.00 each.

These have been obtained from U.S.A. and it is not known when more will be available.

Stickers say, "I COLLECT MINIATURE LIQUOR BOTTLES"

Midwest Miniature Bottle Collectors

(The last line can be cut off if you feel it necessary)

#### LAPEL PINS

We also have a small supply of these, obtained from the same place as the stickers. Pins are available to Club members at the price of \$1.00 each.

Pins say, I collect  
MINI  
bottles

---

#### MAGAZINE

It have come to our attention that our "first" edition of the Magazine has reached the hands of collector - thus - inspiring them we hope - to join our Club, and in so doing receive regular copies and share with us the knowledge gained by contact with others who share the same interest. We would all be interested to know just how many of us there are around New Zealand who "line their walls with bottles".

---

#### CORRESPONDENCE

All correspondence relating to this magazine to be sent to Mrs M. Hollis, 18 Bowers Street, Stokes Valley, Wellington, with the exception of articles for inclusion in the Magazine, which are to be sent to The Editor, 4 Hinemoa Street, Paraparaumu.

---

#### VENUE FOR FOLLOWING MEETINGS

May 15th at 2PM will be at David & Jackie's, 86 Rawhiti Road, Pukerua Bay - this will include a Buy, Sell or Swop, so bring your money and your miniatures.

June 19th at 2PM at Marg's, 18 Bowers Street, Stokes Valley.

July 17th at 2PM at Ian's, 60 Discovery Drive, Whitby.

August 21st at 2PM at Helens, 7 Beach Street, Petone.

September 18th At Pat & Les Wilton's who have very kindly invited the Club for lunch at "Hikawai" Masterton. - Details will be advised at a later date.

The Secretary will advise if there are any alterations to the venue.

---