

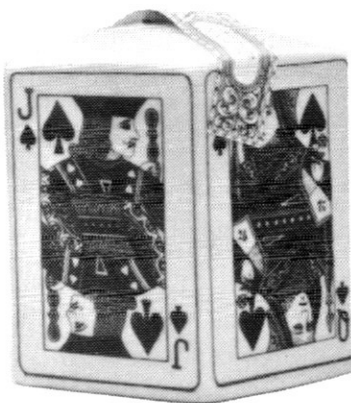
THE

VOL. XVI No. 5
No. 95 1990

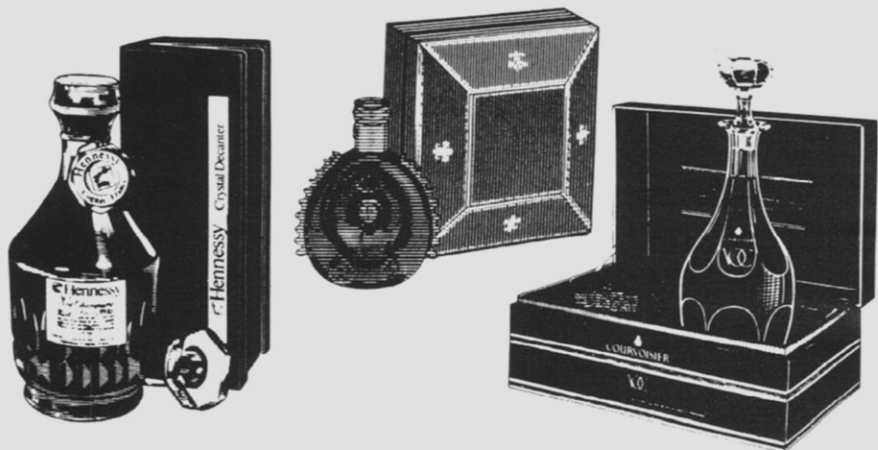
MINIATURE BOTTLE COLLECTOR

NEW. . .from. . .

SILVER STATE SPECIALTIES



\$3.00



Come in and see our huge crystal decanter selection.

HUNDREDS OF MINIATURES IN STOCK--
GLASS AND CERAMIC.

Largest selection of cognacs and single malt scotches.

Serving your ceramic and mini needs since 1962--
come in and say hello to Chuck, Marty, and Ray.

Located in the San Fernando Valley
2½ miles west of Universal Studios.



THE FLASK LIQUOR INC.

GIFT BASKETS - FINE WINES
CERAMICS

12194 Ventura Blvd.
STUDIO CITY, CALIF. 91604

(818) 761-5373
(818) 985-3421

Sponsored by
THE LILLIPUTIAN BOTTLE CLUB

9th ANNUAL

West Coast Miniature Bottle Show

October 13-14, 1990

Saturday 9am-4pm

Sunday 9am-1pm

1,000's of Minis!

- *Figurals*
- *Straight Glass*
- *Beers*
- *Blown Glass*
- *And Other Collectibles*

plus HOURLY RAFFLES!!

EMBASSY SUITES HOTEL

150 Anza Blvd.

Burlingame, CA 94012

(415) 342-4600

*Shuttle service available to
and from San Francisco Airport.*

*For special room rates write
Lilliputian Bottle Club*

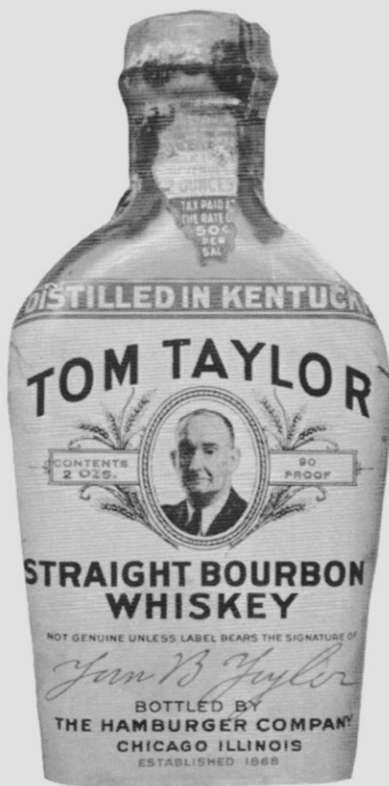
For Further Information and Dealer Availability Contact:
Lilliputian Bottle Club • P.O. Box 2161 • Palos Verdes Peninsula, CA 90274

\$7.95

101

RARE WHISKEY

F L A S K S



By David M. Spaid and Harry A. Ford Jr.

Send \$7.95 plus \$1.00 handling to:

Brisco Publications

Post Office Box 2161
Palos Verdes Peninsula, California 90274
Telephone (213) 547-5945
Cable "Minibottle"

B

Let's Talk

Welcome to the Nineties! It's a new year and the best time to put past mistakes to rest. So, let's take care of the two beauts from the last issue. The gremlins did their number on Mike Olson's article in that the picture of the Brown-Forman Old Hawthorne disappeared. Apologies to you, Mike and, to those who noticed!

The second error was one of those major spelling ones that plague everyone from time to time. If you didn't see it, that makes us happy. If you did see it, WE KNOW, WE KNOW.

Got a letter from Teresa Campbell in Tucson who noted that we really didn't give you enough information regarding the questionnaire. That's what you get when you're too close to a subject, you lose your objectivity. We're now going to issue one last plea for those scores of you who are sitting on your hands. Share your info and collecting highlights with others. The list only goes to subscribers as none of this particular issue are ever given out for any purpose! The reply still hasn't been what it should be, so let us hear from you. This is the last time we'll put this off. You can look for the list in either #97 or #98.

Don't know how many of you received the catalog from the French auction. The bottles in the catalog were extremely ordinary, but the prices weren't. If you think whiskey prices are sky high, you wouldn't believe the projected prices. Now what prices were actually realized may be another story entirely; however, \$100-\$120 for a set of five Riemerschmid jugs from the '50s and '60s seems quite a bit out of line.

Don't you agree? —DMS—

THE

VOL. XVI No. 5
No. 95 1990

MINIATURE BOTTLE COLLECTOR

Editor/Publisher DAVID M. SPAID

Features

SKI COUNTRY	6
The newest Indian maiden.	
MELO'S MINIS	8
A look at Illinois bottles.	
WHAT'S NEW, etc., etc.	11
All the U.S. has to offer.	
A VISIT TO BOOZEVILLE	12
A pugilist you'd like to have.	
MINI WORLD	13
For all you figural collectors.	
WHISKEY HERITAGE	14
Pre-pros from our newest writer.	
FROM JAPAN	16
More excellent new straights.	
CANADIAN CONNECTION	18
Start looking for these bottles.	
SMALL TALK	22
More from eastern Europe.	
BUYER BEWARE	24
A continuation from last time.	
DEALER DIRECTORY	28
Check it out!	
CLUB DIRECTORY	29
Hope we haven't forgotten anyone.	

Our Cover

The two bottles shown are the first releases from a new company, Silver State Specialties. The five sided Royal Flush bottle is available now in Nevada and California. The catcher's mitt (What A Catch) should be issued to coincide with the opening of the baseball season in April. The third bottle scheduled for later this year is a silver horseshow for Nevada. Nice to see some figurals again!

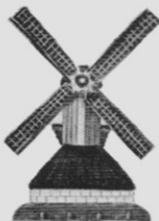
Copyright 1989. BRISCO PUBLICATIONS. The MBC is published six times yearly with single copies \$3.00 and yearly 3rd class subscription at \$18.00. Mailing address: Box 2161, Palos Verdes Peninsula, CA 90274. Phone (213) 534-4943. All rights reserved. Unsolicited manuscripts welcomed.

Original Windmills from Holland

6 typical shapes available, both in
handpainted Blue Delft and
Multicoloured Delft



WIPMOLEN
No. 1



(Hollow Post Mill) This type of mill is a direct descendant of the post mill, but in comparison it seems to be upside down. This effect is due to the fact that the square, revolving upper house is much smaller than that of the post mill, while the pyramidically shaped substructure is much larger. Hollow Post Mills were used on a wide scale as drainage mills in order to drain off superfluous polder water. The majority of these mills is concentrated in the polder region of Zuid-Holland, and in parts of Utrecht and Gelderland.

BERGMOLEN
No. 2



On the sandy soils of the eastern and southern parts of The Netherlands, windmills could be built on a hill or hummock. In reality, however, the mill was constructed at ground level, but it was then surrounded by an earthen wall which could reach up to three metres in height. The 'hill' was usually grassed over, space being reserved in the hummock for the supply and removal of the grain.

STELLINGMOLEN
No. 3



POLDERMOLEN
No. 4



**SET of 6
MULTICOLOR DELFT
WINDMILLS
DIRECT FROM HOLLAND**

\$104.95 ppd

CHISAI BIN

P. O. Box 90245
Los Angeles, CA 90009

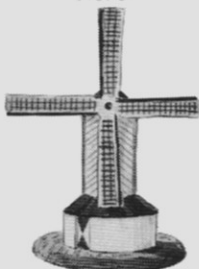
Historical Windmills in The Netherlands

There is no country in the world which because of its windmills, has become as famous as The Netherlands. This fame is partially due to the large number of windmills which were used in a relatively small area, and also because of the high degree of technical and architectural perfection which was attained. In addition, the great variety in both the outside appearance, and the many uses which windmills were put to, remains unique.

A series of six original replica's of the most frequently occurring types of windmills which still can be seen in our country, has been produced by Royal Goedewaagen-Gouda B.V.. These mills are:

Stellingmolens were usually built within towns and villages and served as flour mills. To catch enough wind, the mills were usually of a lofty construction. In order that the mill could be operated efficiently, a wooden gallery was constructed around the outside of the mill, at about the halfway point. This type of windmill still exists in many Dutch towns and villages.

STANDERDMOLEN
No. 5



(Post Mill) This is believed to be the oldest type of Dutch windmill. Its use can be traced back to the early 13th century. The type of construction associated with this mill allows for the whole house to be turned around on a central axle or post, which is of the same height as the building. This particular type of mill was used for grain and it can still be found on the sandy soils of the country, and in Zeeland. Both open and closed post mills occurred.

(Draining Mill) In addition to the post mill, the second largest windmill family consists of the so-called 'bovenkruisers'. The main structure of this type of mill is usually fixed and cannot therefore be moved. Only the dome, which includes the pivot and the sails, can be turned in order to move the sails into the wind. There is a wide variety of mill types within this family group. In the province of Zuid-Holland, for example, there are many of the so-called 'bovenkruiser' mills, while in Noord-Holland the 'binnenkruiser' mills predominate.

PALTROKMOLEN
No. 6



This type of windmill can be distinguished by its unusual shape. It is a typically Dutch invention which appears to have occurred for the first time in the late 16th century, in the Zaan region which lies just north of Amsterdam. In this area, the Paltrokmoelen was used as a saw mill. Apart from the circular, stone foundation, on which the mill can be trundled around, the Paltrokmoelen is completely constructed out of wood.


Royal
Goedewaagen
Holland
Painted by hand

An original and handpainted
product from

Royal Goedewaagen
Gouda-Holland

Ski Country



Don't know if the Ski Country Butterfly Dancer made it to collectors in 1989 or not; however, if it didn't, you can be certain it will make its appearance shortly. According to The Ski Country Collector newsletter, this is the bottle with the lowest production run. Only 888 of this 50ml size were made while a smaller number (846) of the 750ml size were produced. Those who insist on having their bottles full will have to go to Arizona to pick this one up, otherwise it will be sold empty.

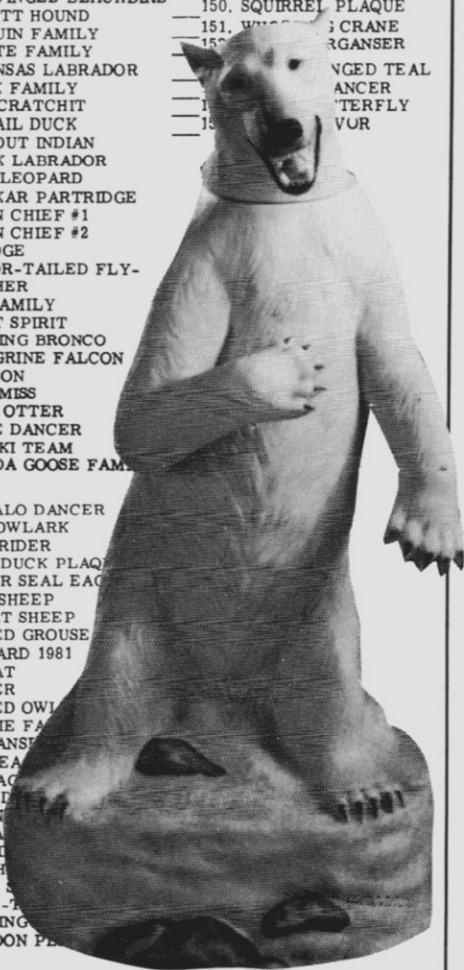
This is the fourth in the series of Indian Dancers created by Mrs. Barbara Foss. The other three maidens are: Rainbow Dancer, Basket Dancer, and Olla Maiden. These dancers have proven to be extremely popular and join the endangered (bottle) species quite quickly. Watch for it!



Ski Country Guide



- | | | |
|-----------------------------------|-------------------------------------|--------------------------|
| 1. MAJESTIC EAGLE | 76. DRUM EAGLE | 140. DEER DANCER |
| 2. SNOWY OWL | 77. MALLARD DUCK FAMILY | 141. BARREL RACER |
| 3. PEACOCK | 78. KING EIDER DUCK | 142. BUFFALO STAMPEDE |
| 4. GILA WOODPECKER | 79. MUSKIE | 143. RINGNECKED PHEASANT |
| 5. RED-SHOULDERED HAWK | 80. SCREECH OWL FAMILY | 144. MOOSE |
| 6. RAM | 81. RED-TAILED HAWK | 145. DUCKS UNLIMITED |
| 7. LEADVILLE LADIES | 82. WHITE FALCON | WOOD DUCK |
| 9. CALIFORNIA CONDOR | 83. BARN SWALLOW | 146. ANTELOPE DANCER |
| 10. GOLDEN EAGLE | 84. BOB CRATCHIT/TINY TIM | 147. PASSENGER PIGEON |
| (aka MOUNTAIN EAGLE) | 85. FIGHTING PHEASANTS | 148. JAGUAR |
| 11. MALLARD DUCK | 86. SAW WHET OWL | 149. GYRFALCON |
| 12. CANADA GOOSE | 87. BALTIMORE ORIOLE | 150. SQUIRREL PLAQUE |
| 13. PEACE DOVE | 88. BLUE JAY | 151. WYOMING CRANE |
| 14. COLORADO SCHOOL OF | 89. RED-WINGED BLACKBIRD | 152. MORGANSEER |
| MINES BURRO | 90. BASSETT HOUND | 153. WINGED TEAL |
| 15. ELEPHANT ON A DRUM | 91. PENGUIN FAMILY | 154. ANCESTRAL DANCER |
| 16. FOX ON A LOG | 92. COYOTE FAMILY | 155. BUTTERFLY |
| 17. HARPY EAGLE | 93. ARKANSAS LABRADOR | 156. WOLF |
| 18. AMERICAN OSPREY | 94. SKUNK FAMILY | |
| 19. MOUNTAIN LION | 95. MRS. CRATCHIT | |
| 20. GREAT GREY KANGAROO | 96. PIN TAIL DUCK | |
| 21. OREGON CAVE MAN | 97. LOOKOUT INDIAN | |
| 22. THE RINGMASTER | 98. BLACK LABRADOR | |
| 23. CLYDE | 99. SNOW LEOPARD | |
| 24. AUSTRALIAN BLACK SWAN | 100. CHUKKAR PARTRIDGE | |
| 25. RED-HEADED DUCK | 101. INDIAN CHIEF #1 | |
| 26. CLOWN BUST | 102. INDIAN CHIEF #2 | |
| 27. SAGE GROUSE | 103. SCROOGE | |
| 28. GREAT HORNED OWL | 104. SCISSOR-TAILED FLY-
CATCHER | |
| 29. BONNIE | 105. FOX FAMILY | |
| 30. TOM THUMB | 106. GREAT SPIRIT | |
| 31. INDIAN DANCERS (6) | 107. WYOMING BRONCO | |
| 37. RACCOON | 108. PEREGRINE FALCON | |
| 38. WOOD DUCK | 109. WIDGEON | |
| 39. SKIER (Red) | 110. NEAR MISS | |
| 40. SKIER (Blue) | 111. RIVER OTTER | |
| 41. TIGER ON A BALL | 112. EAGLE DANCER | |
| 42. LION ON A DRUM | 113. U. S. SKI TEAM | |
| 43. JENNY LIND (Blue) | 114. CANADA GOOSE FAMILY | |
| 44. JENNY LIND (Yellow) | 115. ELK | |
| 45. CIGAR STORE INDIAN | 116. BUFFALO DANCER | |
| 46. WILD TURKEY | 117. MEADOWLARK | |
| 47. CONNECTICUT ROBIN | 118. BULL RIDER | |
| 48. MOUNTAIN GOAT | 119. WOOD DUCK PLAQUE | |
| 49. LIPIZZAN | 120. EASTER SEAL EAGLE | |
| 50. PALOMINO | 121. DALL SHEEP | |
| 51. BABY SNOWY OWL | 122. DESERT SHEEP | |
| 52. BLACK-FOOTED FERRET | 123. RUFFED GROUSE | |
| 53. BLUE-WINGED TEAL | 124. MALLARD 1981 | |
| 54. BROWN TROUT | 125. BOBCAT | |
| 55. SPECTACLED OWL | 126. BADGER | |
| 56. P. T. BARNUM | 127. BARRED OWL | |
| 57. DONKEY POLITICAL | 128. PRAIRIE FA | |
| 58. ELEPHANT POLITICAL | 129. MERGANSER | |
| 59. BIRTH OF FREEDOM | 130. BALD EAGLE | |
| 60. PRAIRIE CHICKEN | (aka EAGLE) | |
| 61. SUBMARINE | 131. WOLF | |
| 62. BROWN PELICAN | 132. PHOENIX | |
| 63. IVORY-BILLED WOOD-
PECKER | 133. CANVA | |
| 64. PHEASANT | 134. CHICAGO | |
| 65. CARDINAL | 135. MT. SH | |
| 66. HAWK EAGLE | 136. STONE | |
| 67. TROUT #2 | 137. WHITE-T | |
| 68. END OF THE TRAIL | 138. FIGHTING | |
| 69. NORTH AMERICAN
INDIANS (6) | 139. RACCOON P | |
| 75. LAND-LOCKED SALMON | | |



melo's minis

by Mike Olson



In past articles I have sometimes let my enthusiasm color my description of the bottles. Obviously, not every bottle can be “terrific” or “fantastic”. To this end, I would like to feature six “decent” bottles from Lionel, plus two “good” bottles from Liberty and finally one “fair” bottle from Old Rose. All of these bottles were produced in Chicago, IL and some have been shown in previous articles.

Lionel Distilled Products Inc. produced many brand names and bottle variations during the 1930's.

(Note the three bottle variations among the six flats pictured.) The high quality of Lionel's products is well known and the bottles are among the best from this time period. I especially like the flats with picturesque labels such as Buccaneer and Old Doc Jacobs.

The two bottles from Liberty Bottling Co. are the only ones I have ever seen from this company, but it's possible there could be more. Old Rose Distilling Co. produced a limited number of quality bottles during this same time period.



The first of the Lionel bottles is Buccaneer Straight Kentucky Bourbon Whiskey. It is 90 proof, has a brown and yellow label trimmed in gold with a multi-colored action scene and has a 1934 Illinois tax stamp. This bottle should be shown in color to fully appreciate the art work in the label. Bottle number two is Old Doc Jacobs Whiskey A Blend. It is 85 proof, has a canary yellow label printed in red, black and gold and has a 1934 Illinois tax stamp. This is followed by 1776 Straight Kentucky Whiskey. It is 100 proof, has a blue label with a multi-colored minuteman and was

made about 1934.

Bottle number four is Old Sullivan Kentucky Straight Whiskey. It is 80 proof, has a lime green label trimmed in gold with a multi-colored portrait and has a 1934 Illinois tax stamp. The next bottle is Old Pointers Bourbon Whiskey A Blend. It is 80 proof, has a red and black label printed in white and has a 1934 Illinois tax stamp. The last of these bottles is The 3 Musketeers Straight Whiskey. It is 80 proof, has a gold label printed in red and black and has a 1934 Illinois tax stamp.



Next we have an interesting pair from Liberty. Both were made For Intrastate Sale and have 1937 Illinois tax stamps. The Hunters Pride Bourbon Whiskey is 90 proof and has a gold foil label printed in red and black. The Ridin' High Bourbon Whiskey is 90 proof, 18 months old, is an amber bottle with a white cap and gold foil label printed in red and brown.

The last bottle is Old Settler Whiskey XXX A Blend. It is 90 proof, has a light and dark blue label printed in red, white and brown and has a 1934 Illinois tax stamp. It took me over a year to acquire this bottle and those who know the story know just how sweet it is!

Finally, I wonder if some people consider the search for a bottle as enjoyable as having the bottle. This may sound strange, but it would certainly explain the behavior of some collectors. Anyway, I enjoy having the bottles much more than searching for them. A good example of this would be the Buccaneer, which I finally acquired after many years at the top of my want list. I felt absolutely no let down and the bottle is every bit as good looking as I thought it would be.

As always, if anyone would like any further information on any bottle pictured, please feel free to contact me.

Until next time. . .MELO. . .

WHAT'S NEW Old, Odd, or Unusual



They're baaaacccccckkkkk. As the little girl said in the poltergeist movie, they're definitely back. Just when you thought you'd shot it in the heart with a silver bullet, run it through with a stake, and/or whatever, the schnapps monster returns.

Actually they can be made fun of, but they are sort of a humorous delight in any collection. So, here goes. The four shown here were recently brought into the light (unearthed. . .if you haven't been "metaphored" to death yet) in Tuc-

son, Arizona, at various tiny liquor stores all of which seemed to pride themselves on having the least amount of stock possible.

However, the 90 proof Peppermint, the Juicy Grape, the Cider Mill Apple Schnapps, and the (our favorite) Country Melon (put a magnifying glass on that label) are all presented here for your edification.

Next time. . .Grandson of Schnapps. . .a terrifying tale if ever there was one!

A Visit To Boozeville

by Lloyd McLeod

Here is another resident of Boozeville. He looks all right, but is a little bit odd as you will see. This is a very short boxer with extremely long arms. He also has such big ears that they probably distracted his opponents.

Here is the odd part now. He is not a bottle but was used in the same way that many of the bottles were used. That is, he was used to stop fights and get a drunk on his way home. This piece was made by Schafer & Vater and has the orange base on which it states in black: BOX WITH ME. It is done in multicolor and is just over 7" tall. The number on the back is 8203.

This figure would have been kept on the back bar and not often given away but first used to calm some guy down.

"Shay, bar (hic) bartender, you can't shut me off. I've been thrown back in better places than this!"

— L.M. —



MINI WORLD

The majority of figurals that you see from Holland tends to always be dutch houses or at least a delft piece. The bottle shown here is neither delft nor (obviously) a house, but it is from Holland. This is a WF (Wyand-Fockink) bottle which is found in very few collections. It's a very colorful bottle as the girl has blond hair, a green top, blue apron and yellow shoes. This particular bottle was found several years ago at an antique show in mint condition. The only label which is missing is that which tells us what our dutch girl contains. If you have a similar bottle, please let us know the contents.



Whiskey Heritage

by

"BUTCH" JONES

I thought I would take a few moments to share some of my pre-pro favorites with you.

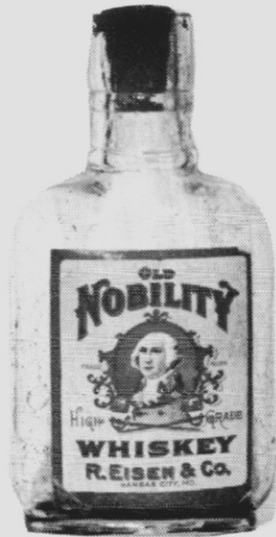
The first is OLD RED STILL. As you can see, it is a little larger than the normal size miniature. It is a bourbon whiskey bottled by W.L. Perkins & Co. of St. Paul, Minn. The date on the bottle is 1917.

The second one is FAMO Sour Mash Whiskey by Simon Binswanger & Bro. of St. Joseph, MO. The whiskey was bottled by Silas Rosenfeld at distillery No. 18. The date on the stamp is 1916.

Bottle number three is a BLACKSTONE Pure Rye Whiskey from Meadville, PA. The whiskey is 6 years old.

The last one of these beauties is OLD NOBILITY High Grade Whiskey by R. Eisen & Co. of Kansas City, MO. The label is very colorful. As you will note, there is a picture of George Washington (?) on the label. This is a 1911 dated bottle.

Hope you enjoyed these as much as I do.



— Butch Jones —



FROM JAPAN

by TAIZO SHIRATSUCHI

This time I would like to present to you some of the tasting samples of Japanese whiskey which were produced only for the liquor stores. So it is very hard to get them as a matter of course.

The first bottle is ORCHID Whiskey with a finishing touch of Sherry. It is from Kirin-Seagram Ltd. and a brown glass dumpy bottle. There is Japanese writing on the label which translates as Whiskey, even though the whiskey is not on the label in English. The label is a reddish-brown with letters on a field of black. It is 50ml contents and 43% alcohol.

HEAVEN from Sanraku Ltd. is the second bottle. It is a short, round clear glass and has a white label with golden letters. On the left-under corner of the label there is shown the Japanese words which mean a sample for tasting. It is also 50ml contents and 40% alcohol as unusual.

The next two bottles are from Nikka Whiskey Distilling Co., Ltd. These are SUPER SESSION and CHOICE. SUPER SESSION is a clear plastic flat bottle with the normal 50ml contents at 43% alcohol. This bottle appeared with a paper board which features a picture of the regular bottle. There is "Triad Blended Whiskey" on the tan label which is trimmed in gold. This whiskey, Nikka

says, is blended with the three high quality materials: Malt whiskey, matured coffee grain and rye grain which Nikka's skilled blenders are able to fashion into Super Session.

CHOICE is also a clear flat plastic bottle containing 50ml, but at 40% alcohol. The label is cream with the red "Choice" and there is also "tasting sample" on the label.

Until next time. . .

— T.S. —



おいしい時間の開幕です。

蒸成モルトウイスキー—蒸成ライ麦グリーン—蒸成ワイルドグレーン

3つの素材が演じる新しいおいしさ

「スーパーセッション」

誕生。

750ml 1980円

3つの素材が調えておいしい味を生み、その中で
モルトウイスキーに比べてはるかにやさしい
味わいのライ麦ウイスキーと蒸成ワイルド
グレーンウイスキーが調えておいしい味を生み
出す。その味わいは、蒸成ワイルドグレーン
ウイスキーとライ麦ウイスキーの調和が
生み出す。

ネオン光るボトルデザイン
高級感を演出

スーパーセッション、蒸成ワイルドグレーンウイスキー、
蒸成ライ麦グリーンウイスキー、蒸成ワイルドグレーン
ウイスキー、750mlのボトルは、200000-0431、
200000-0432、200000-0433。

NIKKA WHISKY

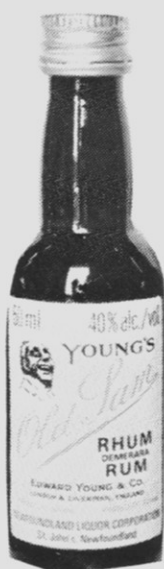




CANADIAN CONNECTION



by TERRY KRAMER



Hello again. In this issue I'd like to tell you about the Newfoundland Liquor Corporation and some of the miniatures which they have produced over the years.

Newfoundland is Canada's most easterly province and the newest of the provinces to join the confederation, having done so in 1949. The bottling plant in Newfoundland has been producing its own brands of minis for approximately 17 years now and also bottles a variety of mini products for other distillers. It also has the largest selection of minis available of any of the provinces, carrying a large number of brands not available anywhere else in Canada. It also has some of the lowest prices!

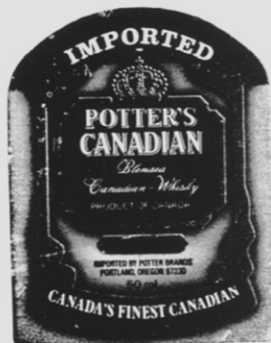
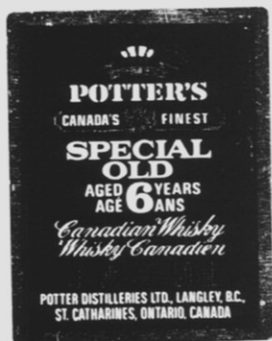
The four minis pictured are products which were bottled in Newfoundland. As you see, the "Newfies" for

some reason like rum, with the selection of rums outnumbering those of the vodkas, gins, Canadian Rye, etc.

First of the three rums featured is the Cabot Tower. It is a product of Guyana, with the rum being imported and bottled by the Newfoundland Liquor Corporation. It is 100% proof, 57.1% alc./vol. and comes in a plastic bottle as do all of the four minis shown.

Next is the Old Sam Rum. It contains 40% alc./vol. and is also a product of Guyana. All of the four labels on the minis have at least a couple of words in French, as do most Canadian minis, to help capture the business of the Quebec drinkers!

The last rum is also a product of Guyana. It is the London Dock 70%. It also came in a 100% proof version and a 70% proof white.



Peter Dawson scotch is the only non rum featured. It again is in plastic with 50ml at 40% alc./vol.

Some of the more unusual miniatures to be bottled at the Newfoundland plant over the years are listed below. Unfortunately I was only sent the labels and have not seen the actual bottles themselves. These are: Pearl Mellow Oak Brandy, Newmans Celebrated Port, Pickles Gin, Potters Vodka, Potters White Rum, Fer-

nandes White Star Rum, Fernandes "Vat 19" Rum, Black Heart Rum, White Heart Rum, and Gold Heart Rum. Again, notice the variety of rums produced over the years.

Well, I hope you've enjoyed this bit of information about the Newfoundland Liquor Corporation and the minis they bottle. Until next time with more Canadian minis. . .

— T.K. —



CANADIAN

FERNANDES
IMPORTED IMPORTÉ

WHITE STAR

RUM RHUM

50 ml 40% alc./vol.

TRINIDAD, WEST INDIES
PRODUCT OF TRINIDAD • PRODUIT DE TRINIDAD

FERNANDES
IMPORTED IMPORTÉ

WHITE STAR

RUM RHUM

50 ml 40% alc./vol.

TRINIDAD, WEST INDIES
PRODUCT OF TRINIDAD • PRODUIT DE TRINIDAD

IMPORTED-IMPORTÉ

**W & A
ROBERT
BROWN-BLANCO**

PRODUCT OF/PRODUIT DE
BARBADOS, GUYANA, JAMAICA & TRINIDAD

50 ml 40% alc./vol.

UNITED RUM MERCHANTS LIMITED
WORTHING ROAD • HORSHAM • SUSSEX • ENGLAND

POTTER'S
WHITE
RUM
RHUM

BLANC

40% alc./vol. 50 mL

A BLEND OF CANADIAN RUM WITH IMPORTED RUM
MÉLANGE DE RHUM CANADIEN ET DE RHUM IMPORTÉ

POTTER DISTILLERIES LTD., LANGLEY, B.C.,
ST. CATHARINES, ONTARIO, CANADA

40% alc./vol. 7.1 fl. oz. 50 ml

FAMOUS LE CÉLÈBRE
NEWFOUNDLAND
SCREECH
de TERRE-NEUVE
RUM-RHUM

IMPORTED FROM JAMAICA AND BOTTLED BY
IMPORTÉ DE JAMAÏQUE ET BOUTEILLÉ PAR
NEWFOUNDLAND LIQUOR CORPORATION
ST. JOHN'S, NEWFOUNDLAND

50 ml 40% alc./vol.

YOUNG'S
Old Sam

RHUM
DEMERARA
RUM

EDWARD YOUNG & Co.
LONDON & LIVERPOOL, ENGLAND

PRODUIT DE GUYANA PRODUCE OF GUYANA
NEWFOUNDLAND LIQUOR CORPORATION
St. John's, Newfoundland

IMPORTED/IMPORTÉ
FROM BARBADOS/DES BARBADOES

COCKSPUR

ESTD 1854

REGISTERED TRADE MARK MARQUE DE COMMERCE C.M.V.

PRODUCT OF BARBADOS • PRODUIT DE BARBADOE

FINE RUM
RHUM RAFFINÉ

BLENDED AND EXPORTED BY/MÉLANGE ET EXPORTÉ PAR
HANSCHELL INNIS LTD.
BARBADOS WEST INDIES

40% alc./vol. 50 ml

IMPORTED-IMPORTÉ

GOLD HEART
RUM RHUM

PRODUCT OF/PRODUIT DE
BARBADOS, GUYANA, JAMAICA & TRINIDAD

50 ml 40% alc./vol.

UNITED RUM MERCHANTS LIMITED
WORTHING ROAD • HORSHAM • SUSSEX • ENGLAND

FAVELL'S
London Dock
RUM-RHUM

100° PROOF

Produce of/Produit de Demerara, Guyana

50 ml 57.1% alc./vol.

BLENDED AND BOTTLED FOR
MÉLANGE ET EMBOUTEILLE POUR:
WHITE FAVELL (VINTNERS) LONDON EC1P 1BL

CONNECTION



NEWMAN'S
CELEBRATED
PORT/PORTO
CÉLÈBRE
MATURED IN NEWFOUNDLAND / AFFINÉ EN TERRE-NEUVE

50 ml / 1.7 fl. oz. liq.
28% alc./vol.

NEWFOUNDLAND LIQUOR CORPORATION
ST. JOHN'S, NEWFOUNDLAND

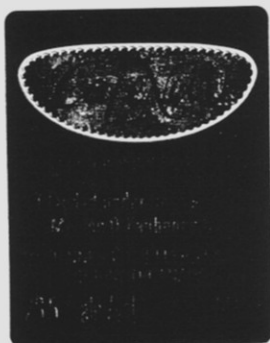
PRODUCE OF PORTUGAL PORTO PRODUIT DE PORTUGAL

Olde Nutcracker
Liqueur

A Warm & Delightful Nut Liqueur
Inspired by the Old & Cherished Recipes
of the Fairy Stewes, circa 1860.

McGUINNESS DISTILLERS LIMITED
TORONTO, CANADA

D4-P50E NF50
28% alc./vol. 50 mL



HENKES

CREME DE MENTHE
LIQUEUR
COOL MINT-MENTHE FRAÎCHE

J.R. HENKES (RUTTERFORD) CANADA INC., MONTREAL, CANADA

ROSS'S
Aloha
COFFEE LIQUEUR
LIQUEUR de CAFÉ

28% alc./vol. 50 ml

PRODUCED BY SPINALET DAWSON, WILLETTS, CANADA
UNDER THE SUPERVISION OF W.A. ROSS & BROTHERS, SCOTLAND

CASTAWAY
Coconut Liqueur made
with Rum
Liqueur à la noix de coco
fait avec rhum

McGUINNESS DISTILLERS LIMITED
TORONTO, CANADA D4P50E

50 ml 28% alc./vol.

ORANGE & BRANDY

LIQUEUR

A RARE BLEND
OF FINE BRANDIES
AND THE ESSENCE OF ORANGE

UN RICHE MÉLANGE
DE BRANDY PUR
ET D'ESSENCE D'ORANGE

McGUINNESS DISTILLERS LIMITED, TORONTO, CANADA
BRIDGETOWN, TORONTO, WEYBURN, KELOWNA, D4P50E

35% alc./vol. 50 mL
0BF 50

PAARL

MELLOW OAK

50 ml 40% alc./vol.

BRANDY
Imported and Bottled by
Imports & Embouteillage Inc.
Newfoundland Liquor Corporation

SMALL TALK

IVO'S EASTERN MINIS

Hello again to all my fans of the Eastern minis. Today I am not going to show you any new creation of a liqueur from an Eastern European country, but only some traditional liqueurs recently issued. These are in new shaped miniature bottles by the plant at Prostejov of the company Fruta n.p. Brno, Czechoslovakia.

I was travelling to Tallin, Estonia, in July of this year to attend the 1st members Meeting of the Baltic Club when I saw these bottles. I had been mainly in Teplice, Bohemia, for shopping for some gifts which I thought I would take along to Tallin and I spied the bottles. They were in a kiosk on the Bohemian side of the frontier crossing between Czechoslovakia and the G.D.R.

Three famous Fruta products were available in the new miniature bottles in that kiosk. They were the Jemna Hanacka Vodka 40% (the fine vodka of Hanna), The Prostejovska Starorezna 40% (the old corn brandy of Prostejov) and the Griotte Liqueur 30% (a cherry liqueur).

The shape of the new Fruta miniatures is quite different from the old type of the firm's bottles. This new one is narrower and higher and stopped with a metallic screw cap. The old minis had a plastic pull cap. The labels are the same as on the older bottles. Only the prices printed on the labels changed from 8 crowns to 9 crowns (vodka and corn brandy) and from 7 crowns to 8 crowns (Griotte).



To get a clearer idea, I will show you here both the older and newer bottles, filled with the Hanna Vodka. As you can see, they are very much alike and yet, very much different!

I presume in the future that all the liquors produced at the Prostejov plant of the Fruta n.p. will be bottled in this newer type. If my premise is correct, I will let you know in a future column.

— Ivan Uhlik

BEW

MORE 1930's LABELS BEING
USED ON JUST ANY OLD BOTTLE!

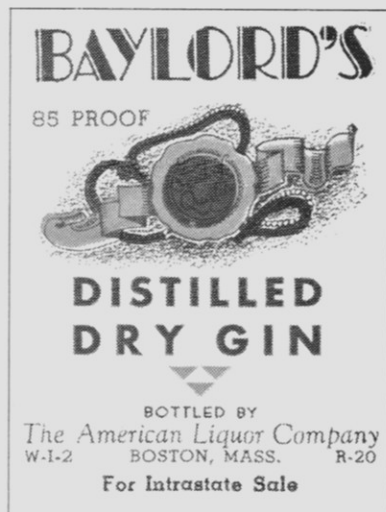


Royal Knight
85 PROOF

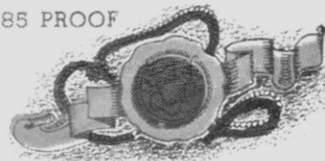


CONTENTS HALF PINT

DISTILLED DRY GIN
BOTTLED BY
THE AMERICAN LIQUOR COMPANY,
W-1-2 BOSTON, MASS. R-20



BAYLORD'S
85 PROOF



DISTILLED DRY GIN

BOTTLED BY
The American Liquor Company
W-1-2 BOSTON, MASS. R-20
For Intrastate Sale



Hyde Park
BRAND



DISTILLED DRY GIN



93 PROOF

BOTTLED FOR
Economy Grocery Stores Corp.
W-1-2 BOSTON, MASS. R-20



LONDON BELLE




DISTILLED DRY GIN
90 PROOF

Bottled Expressly For
Terminal Liquor Co., Inc.
49 Hanover St. Boston, Mass.
W-1-2 R-20

ARE

DISTILLED FROM 100% AMERICAN GRAIN


WOODMERE



DISTILLED DRY GIN


90 PROOF

BOTTLED BY
THE AMERICAN LIQUOR COMPANY,
BOSTON, MASS. R-20



DISTILLED FROM GRAIN
100% NEUTRAL SPIRITS

LYON




DISTILLED LONDON DRY GIN

90 PROOF
BOTTLED FOR
ORSTROM'S PACKAGE STORE
W-1-2 WORCESTER, MASS. R-20

For Intrastate Sale

Silver Bow


90 PROOF



DISTILLED DRY GIN

BOTTLED BY
The American Liquor Company
W-1-2 BOSTON, MASS. R-20

CRYSTAL



DISTILLED LONDON DRY GIN

90 PROOF

BOTTLED BY
THE AMERICAN LIQUOR CO.
BOSTON, MASS. R-20

W-1-2



Jerry Cohen

BOTTLE COLLECTOR'S LIQUOR STORE

THE WORLD'S LARGEST
MINIATURE SELECTION

PACKAGE LIQUOR
BEER



A sampling of the vast inventory found at the Bottle Collector's Liquor Store.

BOTTLE COLLECTOR'S LIQUOR SHOP AND LOUNGE

382-6645
STORE

• THE WORLD'S LARGEST MINIATURE SELECTION •
BEER CAN HEADQUARTERS
PACKAGE LIQUORS

387-6515
LOUNGE

1328 & 30 Las Vegas Blvd. So.
Las Vegas, Nevada 89104

MIDWEST MINI BOTTLE COLLECTORS

11th Annual Mini Bottle Show and Fair

CHICAGO MARRIOTT SCHAUMBURG
50 NORTH MARTINGALE RD.
SCHAUMBURG, IL 60194
(312) 240-0100



*IT'S NOT A BIRD, IT'S NOT A PLANE,
IT'S A SUPER MINI SHOW*

**THOUSANDS OF MINIATURE BOTTLES FROM AROUND THE WORLD!
THE LARGEST MINIATURE SHOW & FAIR IN THE UNITED STATES!**

Friday, April 27, 1990 Club Meeting-8:00 p.m.
Hospitality Room After Meeting

Two Day Show

Saturday, April 28, 1990 - 9:00 a.m. to 4:00 p.m.

Sunday, April 29, 1990 - 10:00 a.m. to 2:00 p.m.

Saturday Night Auction - 8:30 p.m.

Bring Auction Items at 8:00 p.m.

Club President: **Verne Brinker**
Bolinbrook, IL
(312) 739-4410

Chairperson: **Ralph Voris**
234 Legrande Blvd., Aurora, IL 60506
(312) 892-8622

Assisted by:
Tony Dobyms Blackjack, MO (314) 741-3049
Stan Dalen St. Louis, MO (314) 993-9312

Sellers Contact: **Harry Owen**
3926 N. Kostner Ave., Chicago, IL 60641
(312) 282-5228

Membership Info: **Tony Dobyms**
12455 Parkwood Ln, Blackjack, MO 63033
(314) 741-3049

Collectables You May Find

Miniature Bottles • Miniature Beers • Miniature Figurals • Jim Beam Bottles • Advertising Collectables
Shot Glasses • Mirrors • Swizzle Sticks • Back-bar Pieces • Bar Coasters • Matches • And Anything Else
Admission \$1.00 (members free) Exhibitors' Tables \$20.00

DEALER DIRECTORY

To be included in the Dealer Directory, the cost is a nominal \$25.00 per year. Make checks payable to: The Miniature Bottle Collector, P. O. Box 2161, Palos Verdes Peninsula, CA 90274.

FLASK LIQUOR, INC: 12194 Ventura Blvd., Studio City, CA 91604 or call (818) 761-5373 or 985-3421. Located in the San Fernando Valley 2½ miles west of Universal Studios. Huge mini and crystal selection. Stop in and ask for Ray, Chuck or Marty.

#98

FORT COLLINS BOTTLES: c/o Bill Thomas, 2000 Rangeview Dr., Ft. Collins, CO 80524 or call (303) 484-1001 days or (303) 493-8177 eve. and weekends. All Ski Country, Wild Turkey, and many Beam, McCormick, Brooks, Hoffman, etc.

#100

SONOMA WINE EXCHANGE: 452 First Street East, Sonoma, CA 95476 or call (707) 938-1794. Ask for Dan. The exchange features the finest wine selection in Northern California as well as over 200 dif. beers. And, we ship anywhere in the U.S.

#98

PAT KEEFE (formerly F & P): 2290 Hiller Road, W. Bloomfield, MI 48033 or call (313) 363-2068. Lowest prices on figural miniature bottles. Send card or letter for list. Please print.

#100

THE MINIATURE BOTTLE AUCTION CLUB: c/o Albert Rieland, Nordring 16A, D-6113 Babenhausen 1, West Germany. Approximately 1500 bottles to bid upon in each issue with information in both English and German. Fee annually is DM 20. Write for any further information.

#98

THE MINIATURE BOTTLE SPECIALISTS: Geoff & Kay Smith, 5 Queen's Square, Blackpool, FY11QU Lancs., England. We sell not only new minis but old and rare ones too. Write for our lists.

#97

THE LIQUOR COLLECTION: 2084 S. Harbor Blvd., Anaheim, CA 92802 or call (714) 740-1233. Ask for Brian. The largest selection in California or possibly the entire U.S.A. Less than a mile south of Disneyland.

#96

BOTTLE COLLECTORS LIQUOR SHOP: 1328 Las Vegas Blvd., So., Las Vegas, NV 89104 or call (702) 382-6645. The biggest selection found anywhere and the headquarters for figural collectors. Ask for Jerry.

#96

THE CANNERY WINE CELLARS: 2801 Leavenworth, San Francisco, CA 94133 or call (415) 673-0400. Northern California's largest selection of new, old, rare and unusual straight glass and figural minis. Located on Fisherman's Wharf and open seven days a week. Ask for Marty.

#94

MAIL AUCTION of all types of miniatures (whiskeys, scotches, cognacs, figurals, etc.) in every issue of THE MINI BOTTLE INTERNATIONAL AUCTION MAGAZINE, \$20 per year bi-monthly, U.S. and Canada. Overseas \$25 per year in U.S. funds only. Back issues: \$4@. Write: George Terren, 25 High Street, Southboro, MA 01772 or call (508) 460-0964.

#93

The Club DIRECTORY

The California Miniature Bottle Club:
c/o Mr. Sherman Silver, 1911 Willow
Street, Alameda, CA 94501.

Del-Val Miniature Bottle Club:
c/o Mr. Norm Lubber, 653 Parlin
Street, Philadelphia, PA 19116.

**Great Lakes Miniature Bottle
Club:** Ms. Jean Davis, P.O. Box
230460, Fair Haven, MI 48023.

Lilliputian Miniature Bottle Club:
c/o Mrs. Lee Weiss, 5626 Corning
Ave., Los Angeles, CA 90056.

Kiski Mini Beam & Spec. Club:
c/o Mr. John D. Ferchak, Jr., 816
Cranberry Drive, Monroeville, PA
15146.

Midwest Miniature Bottle Club:
Verne Brinker, St. Andrews Woods,
836 Tam O'Shanter, Bolingbrook, IL
60439.

**Miniature Bottle Club of Southern
California:** c/o Dick Francesconi, 836
Carob, Brea, CA 92621.

Northwest Mini Club of Portland:
c/o Dorothy Blyth, P.O. Box 6551,
Portland, OR 97228.

Oregon Miniature Bottle Club:
c/o Mr. Wayne Andrus, P.O. Box
70201, Eugene, OR 97401, phone
(503) 343-4622.

**Western New York Miniature Liquor
Club:** c/o Mr. Wayne Full, P.O. Box
182, Cheektowaga, NY 14225.

**MINIATURE BOTTLE CLUB OF
KOBE:** c/o Dr. Takashi Funabiki,
3-5-41, Morigocho, Nada-ku, Kobe
657 Japan.

**Greater Edmonton Miniature Liquor
Bottle Collectors Association:** c/o
Mr. Bill Davidson, 9214 156th St.,
Edmonton, Alberta T5R 1Z1
Canada.

**Miniature Flasch sammler Deutsch-
lands e.V.:** c/o Gerd Steffenhagen,
Ploner Str. 140, 2420 Eutin-Neudorf,
West Germany.

Club Delle Mignonnettes:
c/o Andrea Sandroni, Via Asiago 16,
60124 Ancona, AN, Italy.

The Mini Bottle Club:
c/o David Hamilton, 47 Burradon
Rd., Burradon, Cramlington, North-
umberland, NE 237NF England.

Osaka Miniature Bottle Club:
c/o Mr. Taizo Shiratsuchi, 11-2
Hakucho 1-Chome, Habikino-shi,
Osaka 583, Japan.

**Port Nicholson Miniature Bottle
Club:** c/o Mr. David Smith, 86
Rawhiti Rd., Pukerua Bay, Well-
ington, New Zealand.

Tokyo Miniature Bottle Club:
c/o Mr. Kazue Daimon, Corp.
Daimon, 4-440 Ikebukuro, Toshima-
ku, Tokyo 171, Japan, tel 03-983-
0688.

**THE SHADOW
KNOWS.**



THE LIQUOR COLLECTION

(formerly Ford's Liquor)

2084 S. Harbor Blvd.
Anaheim, CA 92802

(714) 740-1233

Over 3000+ Miniature Liquor Bottles

MBC

CLASSIFIED ADS

CLASSIFIEDS: Free to subscribers each issue. One ad limit per subscriber. Please limit your ad to fifty words or less.

FOR SALE: 180 different mini beers - send \$1.00 plus large SASE (refundable) for bid list to John Briskie, 286 Wyndale Road, Rochester, NY 14617.

BUY-SELL-TRADE: Giveaway bottles. Send for lists. Also want label under glass and colored enamel back bar bottles. Lloyd McLeod, 22231 N.E. 58th Street, Vancouver, WA 98682.

YARD SALE: The bugs are getting to my straights. I have all kinds and I give up, everything must go. No list, come see, if you are in central Florida. Make offer. I will bow to the highest bidder. There are beers, cordials, scotch, wine, bourbon, gin, tequila, rum, vodka, etc. Ed Ryan, 47838 Bear Road, Altoona, FL 32702 or call (904) 669-2523.

FOR SALE: Yes, we've got the new Silver State Specialties 5-sided Royal Flush bottle. It's only \$9.95 plus \$2 for postage/UPS. We also have the new A. Hardy Captain Junior crystal mini from France. Only 180 of these came into California and these have been snapped up very quickly. They are extremely limited so first come, first served. CHIISAI BIN, P.O. Box 90245, Los Angeles, CA 90009.

FOR SALE: Hard to find Driolis, Beneagles, Old Store, Rynbende, etc. Also 3 cartons of mini bottles packed since the 1970's. Too busy to make a list so I'll sell as is. There are 300 or more so make an offer. T. Ferguson, P.O. Box 42, Mineral, WA 98355 or call (206) 492-3209.

FOR SALE: I've got exactly six of the Arizona Charlie bottle made for the Las Vegas Casino. If you want to add this figural to your collection, send \$39.95 ppd to David M. Spaid, P.O. Box 2161, Palos Verdes Peninsula, CA 90274.

WANTED: Would like to buy any German Giveaway bottles I don't have. I do have a few to sell or trade. Write Lillian Hazdovac, P.O. Box 11, Carmel, CA 93921.

FOR SALE: Excellent collection of whiskeys approximately 2900 scotch and 2700 bourbon, rye, etc. Many California Whiskeys, railroad bottles, fiddle bottles, etc. Will sell on an individual basis. No inventory list available. Marvin Ornstein, 22250 Craggyview St., Chatsworth, CA 91311 or call (818) 998-6633 or FAX (818) 998-4693.

WANTED: I now pay \$300 plus for pre-pro mini beers with "good" labels, Old Craft, Nectar, Manru Lager, unlisted. I now collect only beers, but every type of mini beer bottle. All correspondence answered. John Wyss, #43 Western Hills Estates, Coralville, Iowa 52241 or call (319) 645-2961.

FOR SALE: A collection of over 2600 bottles. This collection includes figurals, straights, wines, beers, etc. and was begun over thirty years ago. For more information about this stunning group of bottles, call or write: Mary Masi, 6 Riverview Circle, Poughkeepsie, NY 12601, ph. (914) 485-8551.

THE MINIATURE BOTTLE COLLECTOR



SUBSCRIBE TODAY!

America's only magazine devoted entirely to miniature bottle collecting and its collectors. Don't forget, the classifieds are free to our subscribers. But, PLEASE, U.S. funds only!

\$ 15 per year

\$ 18 per year - 1st class

\$ 28 two years

no two year 1st class rate

Europe and Asia

\$25 per year



CHECK
ONE

1YR.
MBC _____

2YR.
MBC _____

50 WORD FREE AD IF SUBMITTED AT TIME OF APPLICATION.

MAKE CHECKS PAYABLE TO:
BRISCO PUBLICATIONS
P.O. BOX 2161
PALOS VERDES PEN., CA. 90274

Name _____

Address _____

City _____ State _____ Zip _____

MBC

BACK ISSUES



A few selected issues pre-1979 are available. Write for details. These are now extremely rare and in some cases have been bought back from collectors.

1979 Vol. VI #'s 31-36	\$4.00@
1980 Vol. VII #'s 37-42	\$4.00@
1981 Vol. VIII #'s 43-48	\$4.00@
1982 Vol. IX #'s 49-54	\$4.00@
1983 Vol. X #'s 55-60	\$3.50@
1984 Vol. XI #'s 61-66	\$3.50@
1985 Vol. XII #'s 67-72	\$3.50@
1986 Vol. XIII #'s 73-78	\$3.50@
1987 Vol. XIV #'s 79-84	\$3.00@
1988 Vol. XV #'s 85-90	\$3.00@

Issue #63 is totally out of stock!

Brisco Publications

Post Office Box 2161
Palos Verdes, CA 90274
Tel. (213) 534-4943
Cable "Minibottle"

B

Let's collect Scotch Whisky



\$4.—

plus 75¢

BOX 90245
Los Angeles,
CA 90009



Brisco Publications

Post Office Box 2161
Palos Verdes Peninsula, California 90274

B

BULK RATE
U.S. POSTAGE PAID
PALOS VERDES
PENINSULA, CA.
PERMIT NO. 202